

www.ippwa.com.au



Industrial Protective Products (WA)
Supporting Better Products

FIRST AID & SKINCARE



First Aid & **Skincare**

CATALOGUE

First Aid Diphoterine

DIPHOTERINE®

Diphoterine® is a washing solution designed for ocular and cutaneous chemical splashes. Set up at the work station and used as first-aid, it allows the minimization or avoidance of the development of chemical burns, stopping both the effect and the penetration of the irritant and/or corrosive by way of its amphoteric, chelating and hypertonic properties. Diphoterine®, dispensed in specially designed containers, permits and facilitates effective decontamination, reduces pain, the need for secondary care, sequelae and lost work time.

A clinical study carried out in a hospital setting has shown the advantages of even delayed washing with Diphoterine® for the management of ocular chemical burns, combined with a therapeutic protocol aimed at reducing inflammation and at preventing infection while encouraging healing. A published grade IV case likewise developed progressive epithelialization in less than 21 days and complete and stable healing without surgery after 180 days

There are no known negative interactions with the different families of medicines or devices and more specifically with ophthalmic solutions used in chemical burn protocols.

Diphoterine® is currently being tested for the treatment of chemical digestive burns but has not yet been validated. However, it has already been tested and classed as non-toxic if swallowed.

The DIPHOTERINE® solution

In response to the mechanism of chemical burns, an efficient decontamination requires:

- to remove the chemical from the surface to prevent further penetration
 - to stop polyvalently the six kinds of aggressive chemical reactions
 - to be able to stop the penetration of the aggressive product into the tissues.
1. Like the usual rinsing solutions, The DIPHOTERINE® solution is a liquid and therefore meets the need of rinsing the surface.
 2. The DIPHOTERINE® solution contains a chelating and amphoteric molecule with at least one site able to stop the six kinds of possible reactions (acid, base, oxidation, reduction, solvation, chelation). Polyvalence is a crucial advantage of the DIPHOTERINE® solution.
 3. The DIPHOTERINE® solution is hypertonic which allows to attract towards the outside the chemical that has yet penetrated into the tissues.

The combination of these three properties allows the DIPHOTERINE® solution to prevent any possible sequelae resulting from this kind of accident because it decontaminates the chemical splash completely, inside and outside the tissues, in a polyvalent way.

The DIPHOTERINE® solution is guaranteed to be phosphate-free.

The DIPHOTERINE® solution is recommended for skin/eye decontamination of nearly all chemical substances, such as acids, bases, oxidizers, reducing agents, and solvents.

Aims and Issues of Chemical Decontamination

PREVOR laboratory is a specialist in the field of Chemical Risk.

It has a double mission:

- to help companies decrease the frequency of accidents,
- to develop products which are able to minimize the consequences of chemical projections in the event of an accident.

It is on the basis of this double objective that research has been undertaken to understand the mechanism of chemical burns, to improve on existing rinsing solutions (water, saline solution) and to propose medical devices to be used in case of emergency, irrespective of the surface and size of the affected area, and of the nature and the concentration of the chemical involved.

There are more than 25,000 chemicals likely to cause cutaneous or ocular lesions and burns (after a single or repeated contact), such as acids, bases, oxidizers, reducing agents, and solvents.

The Benefits and the Limitations of Rinsing with Water

After receiving a chemical splash, the victim must be undressed and the affected tissues must be rinsed as quickly as possible. Rinsing with water was the first protocol used for chemical decontamination and this dogma persists on the basis of arguments which are more practical than scientific, because of its general-purpose and non-toxic character, and of its availability. It allows the chemical agent at the surface of the affected tissues to be carried away by a mechanical effect, independent of its nature and concentration.

However, there are limits to water rinsings:

- it does not act on the potentially irritating or corrosive nature of the chemical agent,
- there is no rapid return to a physiological state (the effect of carrying the chemical agent away is limited to the surface tissue and has no in-depth effect),
- water favors the chemical agent's penetration of the tissue
- in order to obtain optimal results, it is necessary to intervene very quickly (10 seconds according to the ANSI standard) after the splash. However, there is sometimes only partial effectiveness, in particular on major corrosive agents.
- Observations of significant after-effects, secondary care and surgical interventions resulting in permanent disability, and even fatalities are regularly reported in the scientific literature.
- Recently, comparative studies have shown the possibility of improving on rinsing with water.

First Aid Diphoterine

Increasing the Chances of Being Saved



Improving on rinsing with water consists of finding other solutions without these limitations in order to increase the chances of the victim both being saved and experiencing a minimum of after-effects.

In order to accomplish this, the DIPHOTERINE® solution, an aqueous solution that contains an

amphoteric and chelating molecule was introduced. The aim of the resulting solution is to prevent chemical burns or to lessen their seriousness.

The improvements brought by the DIPHOTERINE® solution to chemical decontamination are as follows:

- it stops the irritating and corrosive agents actions on the eye and skin, thanks to its amphoteric and chelating properties,
- it stops the chemical agent penetration of the tissues and carries the chemical away from the interior to the exterior of the tissue, thanks to its hypertonicity,
- it allows a rapid return to a pH level between 5.5 et 9, without any danger of a burn,
- it has a prolonged intervention time compared to water (in the minute following the chemical splash) with improved rinsing effectiveness: absence of after-effects, no or little need for secondary care, and no or little loss of work.

The DIPHOTERINE® solution has been classified as a medical device according to the 93/42 CEE.

Directive. It claims to act on the chemical agent in order to stop or to minimize the development of chemical burns. It is classified IIa because it can be used on injured skin. (Dr Cavallini) (link with the

publications: Cavallini, Annals of Burns and Fire disasters 2004, vol XVII-2, 84-87 and Cavallini,

European Journal of Anaesthesiology 2004, 21, 389-392).

Since the DIPHOTERINE® solution does not act on the human organism and its action on the

chemical agent is not obtained neither by pharmaceutical, immunological or by metabolism means, it has not been classified as a drug.

What is important to remember

First-aid rinsing with water was the first decisive improvement in the decontamination of chemical splashes;

But water rinsing has limits that have been improved on with the DIPHOTERINE® solution.

The DIPHOTERINE® solution can be used according to two protocols:

Either as a first-aid treatment in emergency situations, in the workplace, (at the scene of the accident), in order to avoid any after-effects when used in the first minute after the splash has occurred,

Or with a delayed usage, in the case of treatment before or after hospitalization, where the DIPHOTERINE® solution stops the development of chemical burns and allows a rapid return to a physiological state. It is a treatment adapted to the seriousness of the burn which can then be applied in optimal conditions.

If the chemical is corrosive, or if there is a risk that the splash will not be handled in the first seconds, the water protocol represents a missed opportunity when compared to the DIPHOTERINE® solution protocol.

(*Additional Information

The DIPHOTERINE® solution is an active molecule which permits the rapid and effective rinsing of chemical agents.

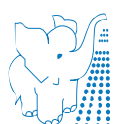
Its effectiveness has been proved on more than 600 chemical agents representing the majority of major chemical groups.

The DIPHOTERINE® solution, thanks to its amphoteric characteristics can never be dangerous.

The DIPHOTERINE® solution, even if it has no chemical activity on a compound, is always more effective when compared to an isotonic solution, and even more when compared to water.

If there is any doubt regarding new chemicals, the effectiveness of the DIPHOTERINE® solution must always be evaluated.

We remain at your disposition to perform this evaluation.



PREVOR

ANTICIPATE AND SAVE

Toxicology Laboratory & Chemical Risk Management

Protocol for Diphoterine® use

In cases of corrosive or irritant chemical splashes on skin or eyes*.

ACTION WITHIN THE FIRST MINUTE



Action within the first 10 seconds

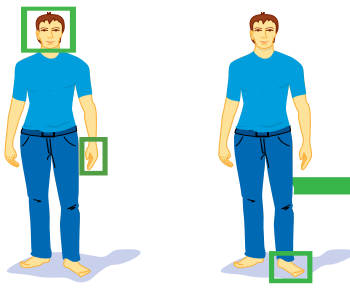


Use 1 SIEW
50 ml

Action between 10s and 60s



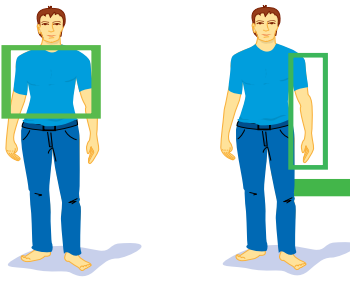
Use 1 LPM
500 ml



3% of body surface



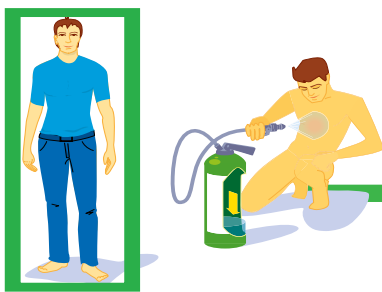
Use 1 MICRO DAP
100 ml



9% of body surface



Use 1 MINI DAP
200 ml



> 9% of body surface



Use 1 DAP
5 litres

WASHING PROTOCOL WITH DIPHOTERINE®*

Start washing **within the first minute** following the splash, beginning with **uncovered areas**.

Remove clothing and/or contact lenses.

Continue washing the **unclothed areas** as quickly as possible.

Do not put back on clothes stained with washing residue or chemicals.

Consult a specialist.

GENERAL INSTRUCTIONS

Never delay washing.

For optimal effectiveness, use Diphoterine® **as the primary action**.

Use the entire contents of the container.

If there is no Diphoterine® available, use water and then wash with Diphoterine® as soon as possible.

For a contact time **greater than 1 minute**, prolong the washing of the contaminated area with Diphoterine® for 3 to 5 times the duration of the contact time.

In case of a delayed ocular splash, it is not necessary to continue washing for more than 15 minutes.

Then immediately seek medical advice.

After an active washing of the eye, the use of **Afterwash II®** is recommended to facilitate a more rapid return of the eye to a physiological state.

If **oral mucosa** is affected by the splash, rinse the mouth with Diphoterine® and then spit it out.

If **the ear canal is affected**, wash as rapidly as possible with Diphoterine® by instilling 500ml inside the canal, leaning the head to one side, in order to allow the liquid to flow out of the ear.

As in any case of unilateral rinsing of one ear with a liquid at room temperature, a dizzy feeling, without any serious consequences, can occur. It will spontaneously disappear after a few minutes.

Container	Average diffusion time
SIEW (50ml)	30 seconds
Micro DAP (100ml)	50 seconds
Mini DAP (200ml)	1 minute 30 seconds
LPM (500ml)	3 minutes
DAP (5l)	5 minutes

First Aid Diphoterine

Diphoterine® How it Works!

Diphoterine® is a multi-purpose first aid active solution it is suitable for all kinds of chemical contamination, acids, bases, chelating agents, oxidizing agents, reducing agents and solvents except for

hydrofluoric acid and its derivatives. In this instance Hexafluorine® should be used.

Diphoterine® is an aqueous non-toxic solution, which contains an absorbent that connects immediately to the chemical aggressor and draws it away from the skin or eye.

Whether it is an irritant or corrosive.

Diphoterine® attracts, neutralises and absorbs the chemical aggressor. This is something water cannot do as it is a hypotonic passive solution, which can make it easier for the chemical to penetrate the skin.

The product has been approved by the Therapeutic Goods Administration for use in

Australia and comes in a variety of Packages, designed for various applications. Diphoterine® is neither toxic, nor irritant, nor corrosive.

Skin Packages



Diphoterine® Micro - DAP 100ML

SC DP 18/H050 Micro 100ml

MICRO DAP

Light and small dimensions.

Easy and ready to use. Permits a quick action.

A soft and micronised spray that wets a lot to permit a rinsing without trauma and a perfect distribution of the solution. Sterile solution. Easy control of the rinsing efficiency : complete and sole use. Does not require a specific installation and maintenance. In conformity with EN 15454-2. EC certification.

Characteristics

Sizes Height: 118 mm

Diameter: 40 mm

Capacity: 100 ml

Weight: 200g

Propellant: Nitrogen

Shelf-life: 2 years

Content: DIPHOTERINE® solution

Use: Hand, cheek, Face

Delay to interfere: 1 minute maximum



Diphoterine® Mini - DAP 200ML

SC DP 18/H051 Mini 200ml

MINI DAP

Light and small dimensions. Easy and ready to use.

Permits a quick action.

A soft and micronised spray that wets a lot to permit a rinsing without trauma and a perfect distribution of the solution.

Sterile solution. Easy control of the rinsing efficiency : complete and sole use.

Does not require a specific installation and maintenance.

In conformity with EN 15454-2. EC certification.

Characteristics

Sizes Height : 220 mm

Diameter: 50 mm

Capacity: 200 ml

Weight: 290g

Propellant: Nitrogen

Shelf-life: 2 years

Content: DIPHOTERINE® solution

Use: Hand and forearm, Limb, front or back of Torso

Intervention Time <1 minute



Diphoterine® Exchange Shower

SC DP 18/H069

Serviceable exchange replacement of inner component of 5 Litre Shower

Exchange shower

Option of getting 5 litre serviced and internal Diphoterine solution is replaced where shower has been used and or has expired. Instead of replacing the whole shower

Diphoterine® 5 litre - DAP Autonomous Portable Shower

SC DP 18/H057 - 5 Litre Autonomous Portable Shower

Autonomous Portable Shower DAP

Easily identifiable, the color of the DAP is green to make the difference with the fire extinguisher. To be used like an extinguisher as a consequence does not entail a specific training. Ready to use, permit a quick action. A soft and micronised spray that wets a lot to permit a rinsing without trauma and a perfect distribution of the solution. The injured person can use the DAP alone. Long flexible that permits a complete rinsing of the body. Transportable. It permits the first aider to be protected as he will not be in contact with the splashed parts of the injured person. The system can be used when the DAP is laying. Easy control of the rinsing efficiency : complete and sole use. Sterile solution. The leading insures the integrity of the system. Does not require a specific use and maintenance (does not require a feed, piping or floodgate system, no more problem of leak). The DAP can always be transferred for the modulare work shops. Can be stocked in a protective box or in an anti freeze protective box. Refillable with the possibility of a maintenance contract. In conformity with EN 15454-2. EC certification

Characteristics

Sizes: 640 * 220 * 200 mm

Capacity: 5 litres

Weight: 11Kg

Propellant: Carbon dioxide (CO2)

Shelf-life: 2 years

Content: DIPHOTERINE® solution

Use: the entire body surface

Intervention Time: <1 minute

Skin and Eye Packages



**SIEW: Diphoterine® 50ml
Sterilised Individual Eyewash**

SC DP 18/H055

Carry it around with you

Immediately available, for maximum effectiveness (kept in a pocket or in a carry pouch)

Sterilised Individual Eyewash - SIEW

Light and small dimensions. Easy to identify. Easy and ready to use. Permits a quick action. The ergonomic eyecup facilitates the eye opening. Soft and autonomous rinsing without pressure. Sterile solution. Sealed to assure the integrity of the system. Easy control of the rinsing efficiency : complete and sole use. Waterproof and compact. Does not require a specific installation and maintenance. In conformity with EN 15454-4. EC certification.

Characteristics

- Sizes Height :** 124 mm
- Diameter:** 64 mm
- Capacity:** 50 ml
- Weight:** 95g
- Shelf-life:** 2 years
- Content:** DIPHOTERINE® solution
- Use:** One eye
- Application:** The Eye
- Intervention:** <10 seconds



Diphoterene® 500ml LPD

SC DP 18/H058

Description:

An autonomous, portable eyewash pouch. Ideal for use within Medical centres or Hospitals. 1 x LPD - PORTABLE EYEWASH Pouch of 500 ml with an Ergonomically eye-shaped cup. Each PORTABLE EYEWASH Pouch makes it possible to decontaminate 1 eye. Use within the first minute following the accident. Single use Products. Use the total contents.

Characteristics

- Shelf Life:** LPD - PORTABLE EYEWASH Pouch - 2 years from date of manufacture
- Capacity:** 500mL
- Application:** The Eye
- Intervention:** <1 min.



Diphoterine® 500ml LPMD

SC DP 18/H082

PVC Bottle portable eyewash fitted with a patented ergonomic eyecup. Specially adapted for vehicles & mobile teams. Light and small dimensions. Easy to identify. Easy and ready to use. Permits a quick action. The ergonomic eyecup facilitates the eye opening. Soft and autonomous rinsing without pressure. Sterile solution. Sealed to assure the integrity of the system. Easy control of the rinsing efficiency : complete and sole use. Waterproof and compact. Does not require a specific installation and maintenance. In conformity with EN 15454-4. EC certification.

Characteristics

- Sizes Height :** 224 mm
- Capacity:** 500 ml
- Weight:** 395g
- Shelf-life:** 2 years
- Content:** DIPHOTERINE® solution
- Use:** One eye
- Application:** The Eye
- Intervention:** <1 minute

**Diphoterine® LMPE.DAS
Mural Washing Station
(2 x 500ml LMPE 1 x 200ml Mini DAP
1 x 250ml Afterwash II®)**

SC DP 18/H103

Fixed and easily identifiable. Easy and ready to use. Allows quick action without assistance. The entire face can be washed, with an LPMD eyewash for each eye and MINI DAP spray. Gentle washing without pressure. Autonomous system. Sterile solution. Easy control of the washing effectiveness: Use each single packaging in its entirety. Easy and adaptable installation. Watertight, in accordance with industrial hygiene and cleanliness. Without special care and without special installation (no need for electricity or evacuation, pipe or valve, no more leakage problems...). The washing station wall is therefore easily removable for independent work spot to modular nature. In conformity with EN 15454-4. EC certification.

Characteristics

- Sizes Height:** 420 mm Width: 330 mm.
- Capacity:** 2 x 500 ml (LPMD) - DIPHOTERINE® solution eyewash | 1 x 250 ml (LOA) - AFTERWASHII® solution eyewash | 1 x 200 ml (MINI) - DIPHOTERINE® solution spray
- Shelf-life:** 2 years
- Content:** DIPHOTERINE® solution, AFTERWASHII® solution.
- Use:** Up to 2 eyes and a face.
- Intervention Time:** <1 minute.



Hi-Viz Carry Pouches

SC DP 18/H091 Lime High Viz Carry Pouch To suit 200ml Diphoterine spray

SC DP 18/H090 Lime High Viz Carry To suit 100ml Diphoterine Spray

SC DP 18/H092 Lime High Viz Carry Pouch To suit 100ml Diphoterine Spray & 50ml SIEW

SC DP 18/093 Lime High Viz Carry Pouch To suit 50ml SIEW

SC DP 18/H094 Lime High Viz Triple Carry Pouch To suit 100ml can and 2 x 50ml SIEW

SC DP 18/H094KA Lime High Viz Triple Carry Pouch To suit 100ml can and 2 x 50ml SIEW complete with carabiner loop on top

SC DP 18/H096 Lime High Viz Carry Pouch To suit 200ml Diphoterine spray

First Aid Hexaflourine

HEXAFLUORINE®

Emergency Washing Solution Specific to Hydrofluoric Acid Hazards

Although not completely chemically dissociated ($pK = 3.20$), hydrofluoric acid (HF) is a hazardous acid (HF).

Its danger is due to:

- Its corrosivity linked to its acid character (release of the H^+ ion),
- Its toxicity due to the release of the fluoride ion F^- , which chelates the calcium and the magnesium of cells.

By definition, the fluorides in acidic medium represent the same type of danger.

The Hexafluorine® molecule can both act on the proton H^+ and chelate the fluoride ion F^- , while removing them rapidly from the surface of the eye or the surface of the skin. The penetration of the acids and the toxic action of the fluorides are stopped.

Thus immediate washing with Hexafluorine® permits to reduce the seriousness of the exposure and to minimize or to avoid complications (heart troubles that may prove fatal) and sequelae (scars, amputations).

Numerous studies show (1,2,3):

- Its efficacy on HF and its derivatives, in comparison with washing with water only or water followed by calcium gluconate, whatever the concentration,
- > Its innocuousness,
- > Its benefit as first aid washing.
- Ex vivo(1,2), and in vivo(3) studies have shown greater efficacy (complete absence of burns) when Hexafluorine® is used within the first minute, versus water and/or application of calcium gluconate (usual antidote for burns due to fluorinated acids), even on concentrations of 70 % HF.

With 32 published cases (3, 4, 5), the use of Hexafluorine® in industry results in the following observations:

- After every washing, pain stops rapidly which facilitates the secondary care management,
- No sequela reported, although 5 cases could have been fatal,
- Sick leaves are close to nil, and consist mainly in observation time in hospital.

CONCLUSION

With an active solution such as Hexafluorine® used immediately after a splash, the penetration and the effect of HF on tissues can be avoided or reduced. Thus using Hexafluorine® limits the development of the burn and its associated complications. After late or insufficient washing, a secondary treatment such as calcium gluconate may be applied, in accordance with the protocol of the responsible medical authority.

Technical information on HEXAFLUORINE®

1. DESCRIPTION

Hexafluorine®: emergency-washing solution for splashes due to hydrofluoric acid and its derivatives.

2 CLAIMS

- First aid device for the washing of hydrofluoric acid
- (HF) splashes operating on the double danger of acid and of fluorides in acidic medium (for instance, boron trifluoride).
- Antalgic effect.
- Hexafluorine® stops the action of the acid, prevents the penetration of the aggressive product and chelates the fluoride ion.

Hexafluorine® may be used on acids, in general.

- At the workplace, when Hexafluorine® is used within the first minute after splash, the chemical can be removed before it starts to burn.
- Used as delayed washing, Hexafluorine® can limit the initial injuries and facilitates the secondary treatments such as calcium gluconate, thus bringing the risk of severe sequelae to a minimum.

3. MAIN FEATURES

- Etat : liquid
- Amphoteric and chelating molecule, absorbing acids and chelating fluorides
- Double effect: washing by mechanical effect and chemical bonding (chelation)
- Shelf life: 2 years

4. SAFETY/INNOCUOUSNESS

- EC 0459 Marking
- Medical device, class IIa
- Acute toxicology: non-irritant (to eye and skin), non-toxic ($DL50 > 2000 \text{ mg/kg}$)
- Sensitization: non-allergenic
- Sterile solution (sterilized by autoclave)

5. INSTRUCTIONS FOR USE

- Storage: Hexafluorine® freezes at 0°C and recovers its properties when warming. It remains stable up to 150°C .
- Use on work premises:
- Remove clothes or/and contact lenses
- Wash as soon as possible (for about 3 minutes for an eye and 5 minutes for skin)

Visit a specialist for medical attention

- Recommended temperature of use: from 15°C and 35°C
- Use as delayed washing:
- Wash for 3 to 5 times longer than the time of contact
- Application of calcium gluconate gel on skin, in accordance with the medical protocol established by the responsible medical authority

Protocol for Hexafluorine[®] use

In cases of hydrofluoric acid splashes or its derivatives in an acidic medium*

ACTION WITHIN THE FIRST MINUTE



To wash one eye



Use
1 LPM
500 ml



To wash a body



Use
1 DAP
5 litres

In all cases, washing must be followed by a medical examination.

Depending on the company's recommended medical protocol, apply locally a specific antidote such as calcium gluconate.

In the case of delayed washing, the application of an antidote is justified because of the systemic effect involved in this kind of situation.

First Aid Hexaflourine

Washing Protocol with HEXAFLUORINE®

- Start washing within the first minute following the splash, beginning with uncovered areas.
- Remove clothing and/or contact lenses.
- Continue washing the unclothed areas as quickly as possible.
- Never put back on clothes stained with washing residue or chemicals.
- Consult a specialist.

General Instructions

Never delay washing.

- For optimal effectiveness use Hexafluorine® as the primary action. If there is no available Hexafluorine®, use water and then wash with Hexafluorine® as soon as possible.
- Use the entire contents of the container.

For a contact time greater than 1 minute, prolong the washing with Hexafluorine® and if needed, continue the washing for 3 to 5 times the duration of the contact time. In case of an ocular splash,

- it is not necessary to continue washing for more than 15 minutes.

Depending on the company's recommended medical protocol,

- apply locally a specific antidote such as calcium gluconate.

Then immediately seek medical advice.

- After an active washing of the eye, the use of **AfterwashII®** is recommended to facilitate a quicker return to a physiological state.
- If **oral mucosa** is affected by the splash, rinse the mouth with Hexafluorine® and then spit it out.
- If the **ear canal** is affected, wash as rapidly as possible with **Hexafluorine®** by instilling 500ml inside the canal, leaning the head to one side, in order to allow the liquid to flow out of the ear.
- As in any case of unilateral rinsing of one ear with a liquid at room temperature, a dizzy feeling, with no serious consequences, can occur. It will spontaneously stop after a few minutes.



Hexafluorine® LPMD

SC DP 18/H083

PVC bottle portable eyewash fitted with an ergonomical eyecup

An eyewash giving a soft eyeflush

Easy to use

Specially adapted for mobile teams, vehicles and laboratories

Application: The Eye Intervention: < 1 min.

Capacity: 200mL

Maintenance: Disposable

Shelf-Life: 2 years



Hexafluorine® LPD

SC DP 18/H063

PVC portable eyewash fitted with a patented ergonomic eyecup

An eyebath without applying any pressure

Easy to use, eye opening made easier

Specially adapted for vehicles & mobile teams

Application: The Eye Intervention: < 1 min.

Capacity: 500mL

Maintenance: Disposable

Shelf-Life: 2 years or 6 months after breaking seal



HEXAFLUORINE® solution Wall-mounted Station - LMPE.FA

SC DP 18/H103

Visible fixed eye & skin wash station with clear door

An eyewash giving a soft eyeflush

Easy to use

Specially adapted for laboratories

Application:
Eyes Intervention: < 1 min.
Capacity: 2 x 500mL bottle,
1 x 250mL Afterwash
Maintenance: Disposable
Shelf-Life: 2 years



Hexafluorine® Autonomous Portable Shower

SC DP 18/H062

5 Litre Hexafluorine

A portable, self contained handspray
Micronised spray for perfect dispersion
Can be fixed or kept in vehicle
Easy to bring and to apply to injured persons
Transportable to mobile teams
Comes with storage box

Application:
The whole body Intervention:
< 1 min.
Capacity: 5 Litres
Maintenance: Refillable
Shelf-Life: 2 years
Environmentally Friendly

First Aid Hexaflourine



Safety Shower and Eyewashes

All Pratt Emergency Safety Showers & Eyewash units fully comply with AS4775 & ANSI2358.1 for emergency eyewash and shower equipment. Stainless Steel construction ensures a long service life, even in harsh working environments, and we have a range of customisable options to suit any application. From portable eyewashes through to full body multi-spray decontamination units, retro-fit Anti-Scald kits and HD mobile trailer systems, we have a solution to any situation.

Combination Units

Pratt has your whole body covered with its Combination units - a safety shower and eye/face wash in one. These stainless steel units feature a conical showerhead ensuring whole body coverage and advanced Aerostream or Softstream nozzles, designed to gently cover the entire face and/or eyes.

Combination Unit Selection Chart

Model Number	Eye Wash	Face Wash	Bowl	Foot Operated	Aerated Nozzles
SE5607	✓	✓	✓	✓	✓
SE603	✓	✓	✓	x	✓
SE612	✓	x	✓	✓	✓
SE616	✓	x	✓	x	✓
SE675	✓	x	x	x	✓
SE679	✓	x	x	✓	✓

SE685	✓	✓	x	x	✓
PEM607	✓	✓	✓	✓	x
PEM603	✓	✓	✓	x	x
PEM675	✓	✓	x	x	x

Please note that all units are hand operated

Eye and Face Wash Units

Pratt's eye and face wash units are the ultimate in water first aid. Using innovative nozzle designs, these units deliver a soft curtain of water to rapidly douse the eyes area or the entire face. Constructed of quality stainless steel these units can be installed in hazardous areas with confidence.

Eye & Face Wash Selection Chart

Eye & Face Wash Selection Chart

Model Number	Eye Wash	Face Wash	Bowl	Foot Operated	Aerated Nozzles	Wall Mounted
SE546	✓	x	✓	✓	✓	x
SE545	✓	x	✓	x	✓	x
SE575	✓	x	x	x	✓	✓
SE515	✓	x	✓	✓	✓	✓
SE505	✓	x	✓	x	✓	✓
SE475	✓	✓	x	x	✓	✓
SE480	✓	✓	✓	✓	✓	x
SE420	✓	✓	✓	x	✓	x
SE400	✓	✓	✓	x	✓	✓
SE415	✓	✓	✓	✓	✓	✓
PEM575	✓	✓	x	x	x	✓
PEM490	✓	✓	✓	x	x	✓
PEM492	✓	✓	✓	✓	x	x
PEM491	✓	✓	✓	x	x	x

Safety Showers



Pratt SE607 Safety Shower/ Eyewash

SS PRA SE607

Free Standing Combination Safety Shower & Eye/Face Wash, Hand & Foot Operated, c/w Bowl.



Pratt PS660 Safety Shower/ Eyewash

SS PRA PS660

Free Standing Reticulated Combination Safety Shower & Eye/Face Wash, Hand Operated, c/w Bowl, which can be used in a continuous flow ring-main water system to greatly reduce the risk of high water temperature.



Pratt SE612 Safety Shower/ Eyewash

SS PRA SE612

Free Standing Combination Safety Shower & Eye Wash, Hand & Foot Operated, c/w Bowl.



Pratt SETESTKIT Test Kit

SS PRA SETESTKIT

Safety Shower & Eyewash Test Kit to allow for weekly and annual inspection & testing as required under AS4775 and ANSI Z358.1. This kit includes all the necessary components and a mobile bin for collection/disposal of water after testing which can be used to store the testing components when finished.



Pratt SE546 Safety Shower/ Eyewash

SS PRA SE546

Free Standing Safety Eyewash, Hand & Foot Operated, c/w Bowl.



Pratt SEAS Anti Scald Device

SS PRA SEAS

Anti-Scald Device, suitable for any Safety Shower & Eyewash, which automatically opens and closes once preset water temperatures are reached to allow the hot water to be flushed from the system. Assists in meeting water temperature requirements under AS4775 and ANSI Z358.1.



Pratt SE4764 Water Additive

SS PRA SE4764

Eyewash Station Water Preservative which is added to the SE4050 Portable Eyewash to protect against bacteria, fungus, algae and other micro-organisms for up to 3 months.



Pratt SE50P Portable Eyewash

SS PRA SE50P

9ltr Portable Eye & Body Wash which uses compressed air to provide a soft aerated water stream and can be easily refilled with potable water.



Pratt SE4050 Portable Eyewash

SS PRA SE5050

60ltr Self-Contained Portable Eyewash which complies with the AS4775 & ANSI Z358.1 Standards criteria for primary eyewash.

First Aid Kits



Vision Safe National Workplace Class B - First Aid Kit

SC VIS FAWT3MH Wall Mountable

SC VIS FAWT3MS Portable Soft case

- Ideal for Medium to Large workplaces
- Recommended for construction sites at which less than 25 persons work and for other places of work at which less than 100 and more than 10 persons work
- Innovative easy to use 5 module set
- Comprehensive maintenance check list
- Available in Wall Mountable, Portable Soft Case or Toolbox versions



Trafalga TRAVEL KIT 3

SC BR 856930 TRAVEL KIT 3

The Travel First Aid Kit is the big traveller with a broad compliment of first aid components.

Elegant larger soft pack design and pocketed internal storage it's the deluxe first aid to go.

Product Dimensions: 240 x 140 x 75mm (WxHxD)



Trafalga Handy 3, 1-10 EMPLOYEE & VEHICLE FIRST AID KIT

SC BR 848794

HANDY KIT 3 RED BAG

SC BR 848890

HANDY KIT 3 BLUE BAG

SC BR 856603

HANDY KIT 3 GREEN BAG

Exceeding NSW 'C' Schedule compliance. It has a simple design and practical internal layout, supplied in an embroidered, hardwearing, zippered, 600D/PVC case.

Product Dimensions: 200w x 130h x 65dmm



Vision Safe Snake Bite Kit

SC VIS FAWSB

- Tough nylon fabric pouch
- Compact kit
- Everything you need for the prompt treatment of snake bite and shock
- Clear and easy to understand instruction guide
- Practical belt loop for outdoor workers
- Comprehensive maintenance checklist



FAEVS ESSENTIAL VEHICLE FIRST AID KIT

SC BR 848794

Durable soft casedesign including carry strap
Tamper resistant zip tied.
First Aid Vehicl Kit



Vision Safe General Purpose First Aid Kit

SC VIS FAWGP

- Tough nylon fabric pouch
- Light weight
- Useful belt loop for outdoor workers
- Comprehensive maintenance checklist
- Soft pack for easy storage



Trafalga HANDY 4 - VEHICLE & LOW RISK FIRST AID KIT

SC BR 856656

HANDY KIT 4 HARD CASE

The Handy 4 Exceeds NSW 'C' Schedule and contains a comprehensive range of first aid products supported by an ABS hard case. Its compact design allows the kit to be easily stored.

Product Dimensions: 187 x 122 x 50mm (WxHxD)

Trafalga HANDY 6 - VEHICLE & LOW RISK FIRST AID KIT

SC BR 856623

HANDY KIT 6 HARD CASE

This is a well appointed first aid kit for its size - all you need and more. The Handy 6 is the top of the range in the handy kits. Supplied with a large selection of first aid inclusions all contained in a quality ABS plastic case.

Product Dimensions: 260 x 170 x 65mm (WxHxD)



Hand Cleaners and Skincare

Occupational Contact Dermatitis (OCD) is accountable for 75 per cent of skin conditions in the workplace. Occupational Contact Dermatitis (OCD) is accountable for 75 per cent of skin conditions in the workplace and occurs in workers who are exposed to irritating or allergenic substances or specific physical factors. The Stoko® range's core competency is "keeping working hands healthy", producing skin compatible products that help prevent occupational dermatitis. All Stoko® products are safe for the

environment, 100% biodegradable, use recycled packaging and most products use zero solvents. The Stoko® Skin Care 3-Point program is a comprehensive solution to address the challenge of Skin Disease at the workplace. The three parts of the program

- 1) Before work care
- 2) Cleansing
- 3) Conditioning helps workers achieve the proper balance between cleaning and skin compatibility.



Stoko Kresto

SC SOL 98704506

For extra heavy cleaning of grease, oil, ink and carbon black. Contains all natural, biodegradable walnut shell scrubbers. Low solvent content, good skin compatibility

SIZE: 250ml, 2000ml, 1892ml, 4000ml



Stoko Solopol

SC SOL 32140

For medium to heavy-duty cleaning of common industrial dirt. 100% solvent-free. Excellent skin compatibility. Contains all-natural walnut shell scrubbers.

SIZE: 250ml, 2000ml, 1892ml, 4000ml



STOKO® GEL - 118ML TUBE 237ML PUMP BOTTLE & 2000ML SOFTBOTTLE

SC SOL 10088806 -

Ethanol based gel that sanitizes hands without water.

Kills 99.99% of common germs that can cause disease. Contains a conditioner to help prevent skin from drying out. Mild to the skin scrubbers.

Includes: 118ml, 237ml, 2000ml



STOKO® BLUEFORCE® - 1000ML & 2000ML SOFTBOTTLE

SC SOL 33540 -

100% solvent-free, scrubber-free hand cleaner for medium to heavy-duty dirt and soils

Green Seal Certified™ Hydrocarbon based solvent, grit-free medium to heavy-duty hand cleaner. Excellent skin compatibility. Smooth liquid with advanced cleaning power. Neutral, fresh fragrance

Includes: 1000ml, 2000ml



STOKO® DISPENSERS - 4000ML

SC SOL 31504 -
Sturdy Plastic
dispensers for
use with STOKO®
Products

Easy to use and
Refill. Hygienic
and Economical
Compatible
with refills and
softbottles



STOKO® DISPENSERS - REFRESH WHITE

SC SOL 55008810 -
Sturdy Plastic
dispensers for
use with STOKO®
Products

Easy to use and
Refill. Hygienic
and Economical
Compatible
with refills and
softbottles



STOKO® TRAVABON® - 100ML TUBE & 1000ML SOFTBOTTLE

SC SOL 33884

SC SOL 29988707

Before work cream that supports the natural function of the skin when working with oil-based substances and organic solvents. Also facilitates cleaning of the skin when exposed to stubborn dirt

Includes: 100ml, 1000ml



Septone Citra Scrub

- SC SEP IHCS500 - 500mL
 - SC SEP IHCS4 - 4L
 - SC SEP IHCS20 - 20kg
- Citrus Based Hand Cleaner
- Contains enviro scrubbers
 - Waterless
 - Speedily removes ingrained soils, grease, oil, dirt and mud
 - Contains lanolin and moisturisers to help prevent dry skin



Septone Citra Scrub

- SC SEP IHPG500 - 500g
 - SC SEP IHPG4 - 4L
 - SC SEP IHPG20 - 20kg
- Heavy Duty Solvent Based Hand Cleaner
- Contains pumice
 - Waterless
 - Speedily removes ingrained soils, tar, carbon, varnish, paint
 - Contains lanolin and moisturisers to help prevent dry skin



Septone Orange Scrub

- SC SEP IHOS500 - 500mL
 - SC SEP IHOS5 - 5L Pump Pack
 - SC SEP IHOS20 - 20L Pump Pack
- Citrus Based Hand Cleaner
- Contains pumice
 - Waterless
 - Pleasant orange fragrance
 - Speedily removes grease, oil, dirt, mud and most industrial soils
 - Contains lanolin to help prevent dry skin

Sunscreen



MARINE BLUE SPF 50+ LOTION TUBE 4HS W/R

- SC MB 0405 - SPF 50+ LOTION TUBE 4HS W/R 100G
- SC MB 9327956000412 - SPF 50+ LOTION TUBE 4HS W/R 200G
- SC MB 9327956000429 - SPF 50+ LOTION TUBE 4HS W/R 500M/L
- SC MB 9327956000436 - SPF 50+ LOTION TUBE 4HS W/R 1000M/L (1L)

Advanced SPF 50+ formulation is fragrance free and easy to apply. It is fast absorbing leaving the skin soft and smooth. Low irritant formulation is ultra-sweat resistant, non-whitening and non-greasy. Contains Vitamin E & Aloe Vera. Very High Protection Broad Spectrum UVA & UVB No slip dry lotion. Non-Whitening & Non-Greasy.



Septone Protecta Sunblock

- SC SEP ISSB125 - 125mL
 - SC SEP ISSB500 - 500mL
 - SC SEP ISSB1 - 1L
- SPF30+ Sunscreen
- 4 Hours water resistant
 - Non-greasy, non-oily
 - Broad spectrum protection
 - Easy rub in formula



PEDOZ POWDER

- SC HAM PEDOZ50 - 50 gram puffer pack
 - SC HAM PEDOZ - 375 gram puffer pack
- Quick relief from foot infections
- Pedoz is used as an antifungal, antibacterial, deodorising and lubricating powder.
 - It is particularly useful in combating foot infections such as tinea (athlete's foot), foot odour and in overcoming odour problems with rubber boots or PVC gloves.



SOLASTICK 30+ LIPBALM

- SC HAM 1019013 = 4.5gram stick
 - SC HAM 1012040 = 12gram stick
- Serious protection for your lips
- Solastick is ideal for protecting the lips from drying, cracking, chapping and sunburn.
 - It is also useful when applied to difficult to protect areas such as the tops of ears.
 - Solastick is Broad Spectrum absorbing UVA and UVB radiation and provides 4 hours water resistance.

Information

For more information on our range of glasses, contact IPP on **08 9330 6355** or visit **www.ippwa.com.au**



Industrial Protective Products (WA)
Supporting Better Products



Industrial Protective Products (WA)
Supporting Better Products

For all sales and information contact

sales@ippwa.com.au

A: 39 Norma Road, Myaree, Western Australia 6154

PO Box: 4175, Myaree Business Centre, Western Australia 6960

T: +61 8 9330 6355 **F:** +61 8 9317 1293 **W:** www.ippwa.com.au